



# San Antonio Samplings



Newsletter of the San Antonio Needlework Guild, Inc.

South Central Region, Embroiders' Guild of America

<http://www.sang-ega.org/>

Vol. LII

February 2021

Issue 2

---

## Our President's Message:

January has gone by so quickly and yet looking back on the month, it has been a productive one. If you are stitching up a storm getting projects done that had been lingering in your closet or have attempted new ones, please share with us. We would love to see your work. Make sure you send high-resolution pictures to [Linda](#) for the newsletter.

February 6<sup>th</sup> of each year is *Stitch-In-Public Day*. The primary focus of Stitching-In-Public is to share our passion for needle arts with the public by demonstrating our talents. Due to COVID-19 restrictions, typical venues such as libraries and other public places that had been used in the past to show off our stitching accomplishments, are closed and social distancing makes it difficult to get together for stitching. However, the SANG board is working on offering a virtual venue in March – so watch for further information.

Our first technique class featuring “Chicken Scratch Embroidery” (aka Gingham Embroidery) will be held on February 13<sup>th</sup> at St. Mark’s Church\* from 10am – 1pm. If you missed the short presentation on chicken scratch embroidery during the general meeting, you can read all about it in this newsletter! Then sign up for the technique class to learn how to elevate simple gingham with a lacey look – just fill out the coupon or contact me directly at [germish@outlook.com](mailto:germish@outlook.com).

At our February general meeting on February 23<sup>rd</sup> we will explore the history and types of stitching frames available and what they are used for. I hope you will join us either at St. Mark’s Church\* or via Zoom.

And don’t forget to join us during the stitch-ins throughout the month. Though COVID-19 still prevents us from taking advantage of stitch-ins in person, there are several taking place on Zoom.

*\*Attendance at St. Mark’s Church allows for social distancing. Masks are required.*

*Karin Shaw*

**If you did not attend the January general meeting you missed an awesome presentation given by Karin Shaw on Chicken Scratch...**

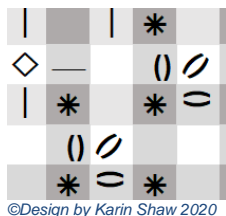
## *Chicken Scratch Embroidery AKA Gingham Embroidery*

The internet is truly a wondrous thing. I was looking up something for a project and stumbled upon some pictures of embroidered gingham. As I researched further, I found out that what I thought was lace appliquéd on gingham, was actually stitching and that it was called chicken scratch embroidery. Now I was curious! Here is what I found out.

The word gingham probably comes from the Malay/Indonesian Gingga or Genggang, which means striped. During the 17<sup>th</sup> century this type of material was imported from Southeast Asia as they had rich, color-fast, natural dyes, that were not available in Europe or America. By the 18<sup>th</sup> century a checkered-style gingham was produced in England and America with imported cottons and dyes, and by the 19<sup>th</sup> century these cottons were becoming cheaper and more popular in the US, especially for clothes and home furnishings. In the US it portrays a homely, pioneer look, and was popular into the 60's.

Typically, gingham was used for tablecloths, curtains, practical workwear, aprons and much more. It was readily available, came in a range of colors and was cheap to buy. Woven gingham has no right or wrong side as the threads are dyed before they are woven into a checkered pattern, making it very economical.

No wonder then, that this was popular, and in order to give the plain gingham a little pizzazz, women started embroidering it with the simple stitches they knew, mostly cross stitch.



©Design by Karin Shaw 2020

You might wonder where the name "Chicken Scratch" came from. There are many theories, one of which being that the stitches first applied onto the material look like a chicken walked over it. However, a more likely explanation is that the printed patterns look like chicken feet on paper. As it was a popular way to embellish gingham in several parts of the world, this type of embroidery had many names: in Europe it is known as Broderie Suisse, Dentelle Vichy, Bordado Española or Tenerife Lace, whereas in the US it is also known as Snowflaking, Amish Embroidery, Gingham

Lace, Tic-Tac-Toe Embroidery, Depression or Hoover Lace, changing its name as it moved across the US with the settlers and in time. In fact, it is believed that the Amish (originally from Switzerland) brought it over to America and it then travelled west with the pioneers during the 18<sup>th</sup> century.



Photos by Laurie Latour



Photos by Laurie Latour



The embroidery is simple and is usually done with white thread, using the checkered squares of the gingham rather than counting threads, to determine where the stitches should go. Covering the dark and white squares with white thread resulted in a look as if lace had been appliqued onto the material, thus giving it a more sophisticated appearance. Variations could be achieved by using different colored thread, often the same color as the darkest squares of the gingham. Smaller checked gingham was used for smaller items such as baby clothes or jar lids, whereas larger checks were used for tablecloths, curtains and pillowcases. Stitches traditionally used are cross stitch, double cross stitch (or Smyrna Cross), running stitches, woven ovals and circles using Perle cotton or floss, a sharp needle, and a tapestry needle. A hoop is also recommended to keep the stitching from puckering.



Photos by Laurie Latour

The more traditional look is done with only cross stitching. Laurie Latour, who collected many aprons and other articles of clothing as well as inheriting several pieces from her grandmother and great-grandmother, shows an almost floor-length apron stitched by her great-grandmother in the 30's or 40's with what she believes is kitchen string. During the depression supplies were hard to come by and money was tight, but the need to embellish everyday items was still prevalent. During that period, the embroidery was known as "Depression Lace" or

"Hoover Lace".

By the 60's this embroidery lost much of its appeal in the US as better living conditions allowed for more sophisticated embroideries to take hold. However, gingham embroidery is still used in many other countries and during my research I found several video tutorials from Spanish and Portuguese speaking stitchers with additional embellishments and newly introduced stitches such as pulled thread and needle weaving. The sky is the limit!



Photos by Laurie Latour

I hope you have been inspired to join us during our techniques class on 13 February at St. Mark's church, where we will be stitching a chicken scratch project. The class will be held from 10 am to 1 pm. Sign up by using the coupon in the newsletter or contact me directly at [germish@outlook.com](mailto:germish@outlook.com).

All pictures published with authorization.

References:

<http://stitchschool.blogspot.com/2008/07/chicken-scratch.html>

<https://www.embroidery.rocksea.org/hand-embroidery/chicken-scratch>

<https://www.needlenthread.com/2012/09/gingham-lace.html> featuring an article by Laurie Latour

<https://www.needlenthread.com/2014/04/how-to-embroider-on-gingham-chicken-scratch-tutorial.html>

<https://sewguide.com/chicken-scratch-embroidery/>

<http://primrosedesign.blogspot.com/2009/09/not-quite-chicken-scratch.html>

[https://www.youtube.com/channel/UCokDnjww1r89Q6xJY0HOB\\_w](https://www.youtube.com/channel/UCokDnjww1r89Q6xJY0HOB_w)

<http://goblinblog.blogspot.com/2018/06/chicken-scratch-embroidery.html>

<https://www.craftsy.com/post/amish-embroidery/>

<http://www.nordicneedle.net/guides/stitching-techniques-guides/chicken-scratch-embroidery/>

<https://pieceworkmagazine.com/cheering-daily-life-with-depression-lace/>

<https://visforvintage.net/2012/09/11/gingham-fabric/>

Email conversation with Laurie Latour

## Membership

---



February	1	Paula Comans
	5	Rosemary Carter
	8	Kay Foster
	10	Rosie Moyna
	10	Shawn Taylor
	19	Caroline McCauley

### ***Something of interest:***

#### **Erica Wilson-A Life in Stitches**

Erica Wilson played a dominant role in enlivening the needle arts in the US (and even throughout the world) in the latter half of the 20th century. Winterthur Museum has constructed a wonderful online exhibition about Erica Wilson - [ericawilson.winterthur.org](http://ericawilson.winterthur.org). It's very informative and inspiring!

(reprinted from "Scissor Tales", Houston Embroiderers' Guild Newsletter)



# Technique Class

*EGA's mission is "... to inspire passion for the needle arts through education and the celebration of its heritage". Please join us during our technique classes throughout the year held the 2<sup>nd</sup> Saturday of February, April, September, and November from 10am to 1pm.*



## February Technique Class

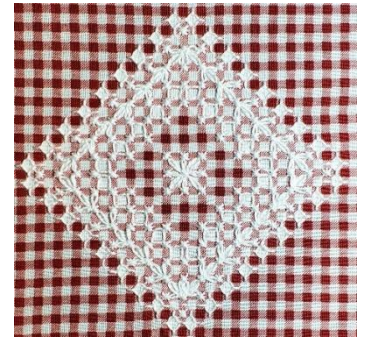
13 February 2021

10am-1pm

### *Chicken Scratch Embroidery -*

Using cross stitch, double cross stitch, running, straight and woven stitches create a lacy effect to transform ordinary Gingham into something elegant. This is an excellent project for beginners as the method is simple and the results are beautiful.

Select a kit from three different colors. All you need are your regular stitching supplies.



## February Technique Class

13 February 2021

Chicken Scratch Embroidery

Your Name: \_\_\_\_\_

Cell/Phone: \_\_\_\_\_ Email: \_\_\_\_\_

Address: \_\_\_\_\_

Please choose from the following options:

\$3 – red/white Gingham, needle, and thread \$ \_\_\_\_\_

\$3 – grey/white Gingham, needle, and thread \$ \_\_\_\_\_

\$3 – black/tan Gingham, needle, and thread \$ \_\_\_\_\_

\$3 – for an 8" hoop \$ \_\_\_\_\_

**Total:** \$ \_\_\_\_\_

**Deadline is 5 Feb 2021 ~ Please make check payable to SANG**

Send coupon and payment to Karin Shaw, 18311 Emerald Forest Dr, San Antonio TX 78259

# Programs

---

## February

### ***Hooped, Stretched or Snapped***

Walking into an embroidery store can be overwhelming, especially if you have not done a lot of stitching before. The plethora of threads, fabrics, scissors, needles, and other paraphernalia is dizzying. Once you have decided on your project though, you must now select a way to ready it for stitching. Do you use a hoop, stretcher bars, Q-snaps? During the general meeting on February 23<sup>rd</sup> we will explore the ways to frame your piece for stitching and which method is best to use for the kind of embroidery you are doing.

## March

### ***To the Point - Needles***



Buying kitted projects has one big advantage: everything you need for the project is included. But what if you want to let your creativity flow and stitch something truly unique? Apart from having an idea, you will need background material, thread of different colors and textures, and, of course, the needle you will be working with. Different applications require different needles. Find out more during our March general meeting on March 23<sup>rd</sup> about what you should know before taking that first stitch.

## **Stitch-Ins**

---

We will have a virtual ZOOM stitch in Tuesday, February 9 at 7:00 and Tuesday, March 9, 2021.

Stitch ins on Wednesdays at Franklin Park are on hold. Covid numbers are too high to stitch anywhere except at home.

We are going to have a Facebook Live for Stitch in Public Day probably in March. We will have more on this later.

The ZOOM link for the stitch ins for PC, Mac, Linux, iOS or Android:

<https://rackspace.zoom.us/j/2103122835?pwd=UWhNcmJSdXNPNnlsU3RhN0F2L3Q0QT09> Password: 97531. Let Tawney know if you have any problems getting in.

I don't know when Northwood Presbyterian Church will open for us to stitch on Wednesdays and 4<sup>th</sup> Tuesday Day meetings. Libby said we would be back after the first of the year. The Church is not having their parishioners in the sanctuary yet. I will get the word out when I hear from them. The libraries have not opened up either. I have not heard about Maker Faire either.

*Joan Vanderbrink*

# Region News

---

I received an email regarding the February 20, 2021, South Central Region EGA Mid-Year meeting. It will be on Zoom at 10:00 am. They will have a workshop grosgrain ribbon scissor fob immediately after the Mid-year Meeting. I checked with Debbie Osborne at [scr.regionsecretary@gmail.com](mailto:scr.regionsecretary@gmail.com) This meeting is open to all members. They just need to rsvp her to be sure they have enough zoom capability. They will not be able to vote on anything presented at the meeting.

Join Zoom Meeting link:

<https://us02web.zoom.us/j/7482021565?pwd=cVpWTUo0VCtFYjBoQ01ZcS9EcWFkZz09>

Meeting ID: 748 202 1565

Passcode: 839822

One tap mobile

+13462487799,,7482021565#,,,,\*839822# US (Houston)

+16699009128,,7482021565#,,,,\*839822# US (San Jose)

The other news, Pat Sweet said something about the EGA Blog. I went to the EGA website and there is a spot to sign up to get email notifications when something is posted to the blog. This should be interesting seeing new patterns and what other chapters are doing. Check it out on the website [egausa.org](http://egausa.org)

*Joan Vanderbrink*  
*Region Rep*



SANG members were saddened to read the email from Vickie McRae regarding the passing of Carol Pederson December 31, 2020. Carol owned Cross Stitch Plus, a well-stocked cross stitch and needlework store and if she did not have it, she would do her best to get it for you. We had fun stitching there. I remember one of the other ladies told me to use a baby toothbrush to clean fibers out of reverse stitches. Works like a charm. I still have some of the patriotic heart cross stitch Carol designed and gave it to us for a class.

As it says in the obituary, " Rest in peace, Carol. Your sweet, happy, positive, optimistic self will live forever in our hearts."

Her obituary can be found at [www.ohalloranmurphy.com/obituary/carol-pedersen](http://www.ohalloranmurphy.com/obituary/carol-pedersen)

## Calendar of Events

# February

### Feb 9

ZOOM Stitchin 7:00pm

### Feb 13

Technique Class 10:00am-1:00pm

St. Mark's UMC

1902 Vance Jackson

### Feb 15

Board Meeting, 7:00 pm

ZOOM

### Feb 23

Night Meeting

7:00-8:30pm

St. Mark's UMC Church

1902 Vance Jackson

OR ZOOM

## Calendar of Events

# March

### Mar 9

ZOOM Stitchin 7:00pm

### Mar 15

Board Meeting, 7:00 pm

ZOOM

### Mar 23

Night Meeting

7:00-8:30pm

St. Mark's UMC Church

1902 Vance Jackson

OR ZOOM

### ***Follow us on Zoom for Stitch-Ins and Meetings***

The ZOOM link for meetings from PC, Mac, Linux, iOS or Android:

<https://rackspace.zoom.us/j/2103122835?pwd=UWhNcmJSdXNPNnlsU3RhN0F2L3Q0QT09>

Meeting ID: 2103122835

Password: 97531



## Membership Form

Membership dues are up for renewal in May each year. Renew and keep your benefits coming.

		2021 Dues Amount
New SANG Primary Member	National, Regional, and Chapter Dues	\$55.00/year Aug 1-Oct 30/\$43.25, Nov 1-Jan 31/\$35.50, Feb 1-Apr 30/\$23.75
Returning SANG Primary Member		\$55.00
SANG Plural Member (Primary Membership in another South Central Region Chapter)	Chapter Dues	\$11.00
SANG Plural Member (Primary Membership outside South Central Region)	Regional and Chapter Dues	\$16.00
SANG EGA Life Members		\$16.00

\*New Members dues will be prorated as follows: Aug 1-Oct 30/\$43.25, Nov 1-Jan 31/\$35.50, Feb 1-Apr 30/\$23.75

VERY IMPORTANT: Each member must make any changes to personal information (address, phone number, email) directly to EGA. Go to the National EGA website - [www.egausa.org](http://www.egausa.org) - click the "Contact Us" tab at the top of the page. Under "Other contacts" is a form "Change of member address or email". NOTE: Our membership chair, Lisa Smithee, is no longer allowed to do it for you.

### Membership Form

#### New Members and Renewals

Annual membership is from May through April. Dues for one year are \$55 and are prorated for new members only as the year goes on (Aug 1-Oct 30/\$43.25, Nov 1-Jan 31/\$35.50, Feb 1-Apr 30/\$23.75)

Dues include a subscription to Needle Arts magazine and to the chapter's newsletter, San Antonio Samplings. Meetings are held on the fourth Tuesday of each month at 10:00 AM in the morning as well as at 7:00 PM in the evening.

Plural membership is available to members of other EGA Chapters for \$11 per year if your primary chapter is within the South Central Region or \$16 if outside the South Central Region. Life member dues are \$16 per year.

I would like to join SANG as a new Member    How did you hear about us? \_\_\_\_\_

I would like to renew my membership.    My EGA Member Number is: \_\_\_\_\_

Name: \_\_\_\_\_    I have been a member since: \_\_\_\_\_

Address: \_\_\_\_\_    Birthday: (mm/dd) \_\_\_\_\_

City/State/Zip: \_\_\_\_\_    Phone: \_\_\_\_\_ home/cell

E-mail: \_\_\_\_\_    Amount Paid: \_\_\_\_\_

I would like to receive the newsletter by e-mail.  Yes  No

(If yes, ensure that your correct e-mail address is entered in the line provided.)

Plural, Life or At-Large Members please list home chapter \_\_\_\_\_


Please print and mail this form with your check made payable to **San Antonio Needlework Guild** to:

**Carmel Friesenhahn, P.O. Box 178, St. Hedwig, TX 78152**

## February 2021

Sun	Mon	Tue	Wed	Thu	Fri	Sat
	1	2	3	4	5	6
7	8	9 ZOOM Stitchin 7pm	10	11	12	13 Technique Class 10am-1pm St. Marks UMC
14 <i>Happy Valentine's Day</i>	15 Board Meeting 7pm ZOOM	16	17	18	19	20
21	22	23 SANG in person and ZOOM Mtg. 7-8:30pm	24	25	26	27
28						

## March 2021

Sun	Mon	Tue	Wed	Thu	Fri	Sat
	1	2	3	4	5	6
7	8	9 ZOOM Stitchin 7pm	10	11	12	13
14 Daylight Savings Time Begins	15 Board Meeting 7pm ZOOM	16	17 	18	19	20
21	22	23 SANG in person and ZOOM Mtg. 7-8:30pm	24	25	26	27
28	29	30	31			

**Blue Bonnet Studio Time Needle Arts Retreat  
February 19-22, 2022**

Featuring 10+ Faculty & 15+ Classes

Sugar Land Marriott Town Square

Sugar Land, Texas, USA

281.288.9290 for room reservations



For event details and registration

Visit [www.bluebonnetstudio.com](http://www.bluebonnetstudio.com)

Telephone: 713.849.9848

Email: [maryelvis@sbcglobal.net](mailto:maryelvis@sbcglobal.net)

• **RESCHEDULED** •



**The Covid-19 situation is being continually monitored and adjustments to dates will be made as needed. We encourage all our members to follow CDC protocols. Stay at home if you are vulnerable, wear masks when out, and practice social distancing. Please be safe!**

**To any non-members who may be reading this newsletter:** We hope you've enjoyed reading our newsletter. SANG would love to have you attend a meeting or join us at any of our community stitch-ins. All guild activities are open to SANG guild members and our sister-guilds (ANG and Bluebonnet). EGA members belonging to other guilds are welcome to attend our meetings, and attend workshops and classes if space is available. Visitors are welcome to attend any of our community stitch-in events and are encouraged to attend up to two official guild meetings (either the First Wednesday of the month stitch-in or our Fourth Tuesday day or night meetings) prior to joining. Workshops and classes are only open to EGA Guild members unless otherwise stated in the announcement.

3501 Enchanted Farm  
Schertz, TX 78154



**EGA National Seminar 2021**  
**September 1-5, 2021**  
**Chicago, IL**

San Antonio Needlework Guild, Inc. <http://www.sang-ega.org/>

Meetings are held on the 4<sup>th</sup> Tuesday of each month.

Day Meetings: 9:30 Social, 10:00-12:00 Meeting, Northwood Presbyterian Church, 518 Pike Place.

Evening Meetings: 6:30 Social, 7:00-9:00 Meeting, St. Mark's UMC Church, 1902 Vance Jackson

Annual Dues: \$55.00

Plural Dues: \$11.00 for SCR Region Chapter Members

\$16.00 for non-SCR Region Chapter Members

President – Karin Shaw – (210)264-7711 [germish@outlook.com](mailto:germish@outlook.com)

Vice President – Pat Sweet – (210)365-8951 [sweetp50@aol.com](mailto:sweetp50@aol.com)

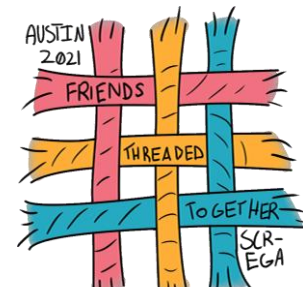
Membership – Lisa Smithee - (361)218-3562 [lisa.smithee01@gmail.com](mailto:lisa.smithee01@gmail.com)

Secretary – Joan Vanderbrink – (210)422-4770 [jjvandy@peoplepc.com](mailto:jjvandy@peoplepc.com)

Treasurer – Carmel Friesenhahn – (210)863-3457 [carmelfriesenhahn@yahoo.com](mailto:carmelfriesenhahn@yahoo.com)

Outreach - Lisa Anderson - (210)531-6697 [lkanderson@satx.rr.com](mailto:lkanderson@satx.rr.com)

Editor – Linda Bell – (210) 884-6659 [linbell500@satx.rr.com](mailto:linbell500@satx.rr.com)



**Austin, TX**  
**June 1-5, 2021**

**Newsletter Deadline for submissions is the 4th Tuesday of the month.**

*The mission of the Embroiderers' Guild is to inspire passion for the needle arts through education and the celebration of its heritage.*